

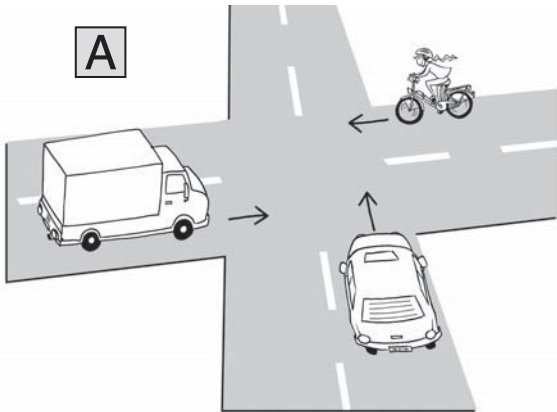
Silber-Training (7)



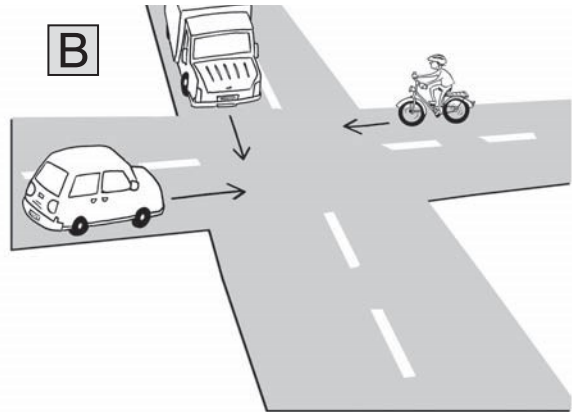
Rechts vor links

Wer darf hier zuerst fahren?

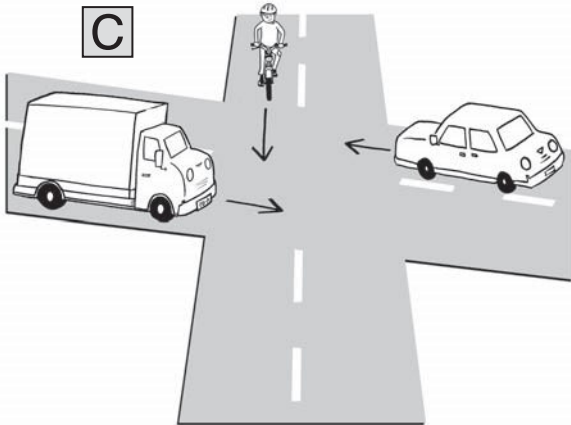
Trage die Ziffern von 1–3 ein, um die Reihenfolge zu bestimmen, in der die Verkehrsteilnehmer fahren dürfen.



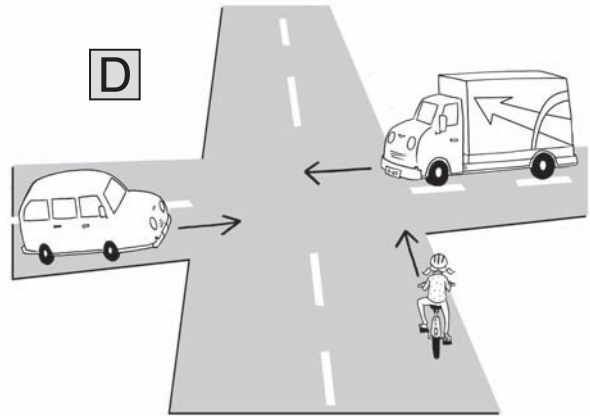
- Radfahrer LKW Auto



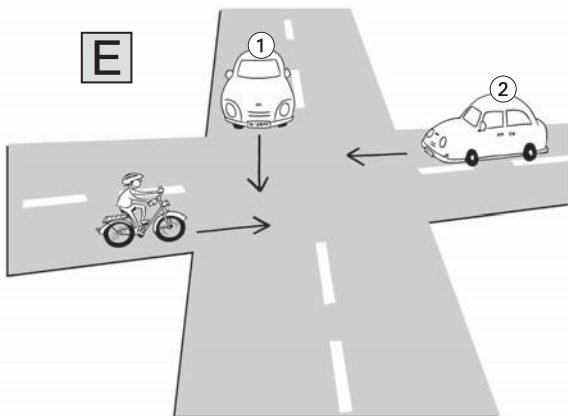
- Radfahrer LKW Auto



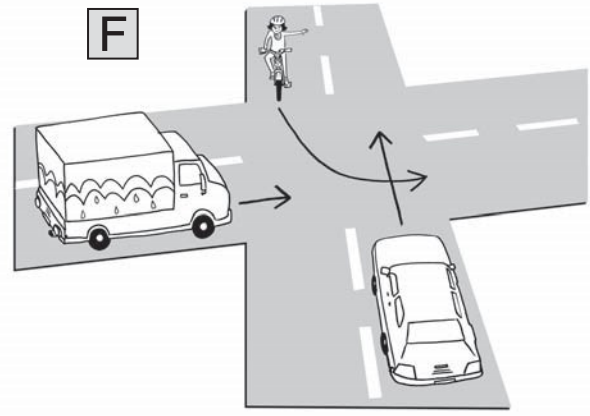
- Radfahrer LKW Auto



- Radfahrer LKW Auto



- Radfahrer Auto 1 Auto 2



- Radfahrer LKW Auto